

# 2022 ANNUAL REPORT

## ***Mission Statement***

To immerse visitors in rich layers of Japanese culture and heritage through diverse garden landscape designs, production of traditional Japanese festivals, ceremonies, and performing arts, museum and art gallery exhibitions, and educational workshops and classes, as well as to provide a haven of greenery and tranquility for the Tucson community.

## ***Board of Directors***

Chairperson: Jonathan Linton.

Directors: Yamada Takuhiro (President of Hanatoyo Landscape Co., Ltd., Kyoto), Yukihiro Ibuki, Eric Carr.

Advisory members: Arlene Watkins, David Lesser.

## **2022 EVENTS**



**KEN KOSHIO - A Taiko Drumming Performance at the Gardens**

*Saturday, January 8, 2022 - 4pm-6pm*

## **EVENINGS AT YUME**

*February 17-19, 2022 - 6:30pm-8:30pm*

With **Master Bill Savary and the Arizona Kyudo Kai.**

Sculptural ikebana floral arrangements.





**2022 SPRING IKEBANA FESTIVAL**

*February 24 through March 6, 2022*

**MUSIC OF DREAMS - An Evening of Japanese Flute**

*March 17-19, 2022 - 6:30pm-8:30pm*

‘Music of Dreams’ featured a *shakuhachi*, or Japanese bamboo flute, concert in a nightly scenery that glorifies the gardens.

An exceptional Photo Exhibit by Kate Breakey, from her series "Moon Song", was on display during those three nights.





## **A SAMURAI NIGHT AT THE GARDENS**

**An Interactive Samurai Performance and Movie Night**

*Saturday, March 26, 2022 - 6pm-9pm*

In collaboration with the Japan Foundation LA and Burai Productions.

Movie: "*Uzumasa Limelight*" (2014)

## **rites of spring - A Butoh Performance**

**by Funhouse movement theater**

*April 7-9, 2022 - 6:15pm-8:30pm*



## **CHILDREN'S DAY FESTIVAL - KODOMO NO HI**

*Sunday, May 8, 2022 - 10am-2pm*

With Odaiko Sonora and the Takoyaki Balls Food Truck.

**REOPENING CELEBRATION**

*Saturday, October 1, 2022 – 9:30am-4:30pm*

With Odaiko Sonora and the Takoyaki Balls Food Truck.



**CONCERT SERIES: Traditional Japanese**

*Thursday, October 13, 2022 – 6pm-8pm*

**2022 FALL IKEBANA FESTIVAL**

*October 27 – November 6, 2022*





## **EVENINGS AT YUME – FLOATING LANTERNS**

*Friday, November 4 & Saturday, November 5, 2022 –  
6:30pm-8:30pm*

## ***“PATH TO EMOTIONAL HEALING” PROGRAM***

Our innovative *Path to Emotional Healing Program* provided a full year of unlimited visits to Yume Japanese Gardens for participants to immerse themselves in its natural beauty, peace and serenity and reflect upon personal experiences.



## **IKEBANA CLASSES**

In-person *Ikenobo* Ikebana classes with Patricia Deridder.

Virtual *Sogetsu* Ikebana classes via Zoom with Ekaterina Seehaus.



### **TEA CEREMONY at Yume Japanese Gardens, with Sakura Tea Circle**

*Saturday, February 5, 2022 - 1pm & 2:00pm*

*Saturday, April 16, 2022 - 1pm & 2:30pm*

*Sunday, October 23, 2022 - 1pm & 2:30pm*

*Sunday, December 18, 2022 - 1pm & 2:30pm*

## WORKSHOP, LECTURES, RECEPTIONS, AND PRESENTATIONS

**Workshop: Traditional Matcha  
Grinding/Tasting and Stone Lantern Walk**

**with Master Takaaki Saida**

*Saturday, April 9, 2022 - 10:30am-12:30pm*



**Artist Reception with Elizabeth Sanjuan**

*Friday, November 11, 2022 – 5:30pm-7pm*

**Book Presentation with Donna McKinnis**

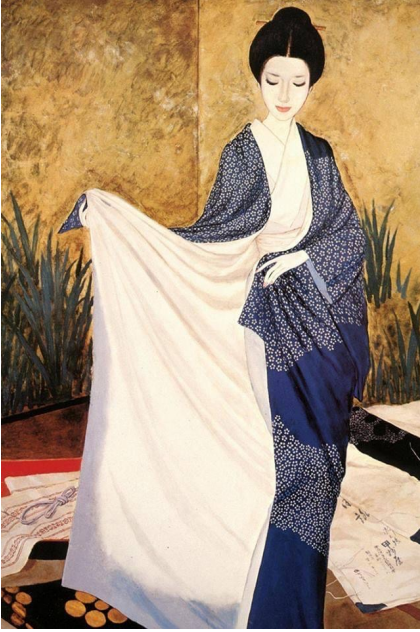
*Friday, November 18, 2022 – 10:30am-11:30am*



**THOUGHTS  
FROM  
JAPAN**

*Life lessons from Tokyo's fast lane  
and other Asian places*

**by Donna Copen McKinnis**



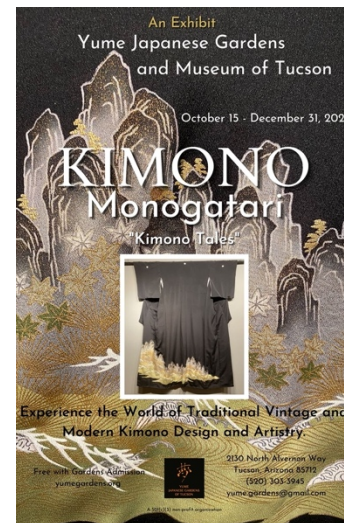
**Lecture: “The Art of Kimono”, by Lia Chen and the Arizona Kimono Club**

*Sunday, December 11, 2022 – 10:30am-12pm*

## **EXHIBITIONS – MUSEUM AND ART GALLERY**

**“Kimono Monogatari – Kimono Tales”, from Yume Museum Collections**

*October 15, 2021 – January 23, 2022*







**“Photograms”**, by Kate Breakey

*January 27 - May 29, 2022*

**Obi: Beauty in a Knot**, from Yume Museum Collections

*October 1, 2022 – May 6, 2023*



**“Hokkaido: Silent Snow”**, by Elizabeth Sanjuan

*October 1, 2022 – January 29, 2023*

**“Shinto Inspired Art”**, by Xandra (Alexandra Dedovitch)

*October 1, 2022 – December 31, 2022*





**“No mud, No Lotus”, by Curt Brill**

*March 2 – May 6, 2023*

**DONATIONS of Admission Tickets to Charitable Organizations:**

- **Southern Arizona Koi Association**
- **Tohono Chul**
- **Yoga Connection**
- **Arizona Opera**

## **FINANCIALS**

Presented here is a plan of our financials for Fiscal Year 2022, starting January 1, 2022, and ending December 31, 2022.

### ***Revenue:***

Grants: \$0

Donations \$9,138

Memberships \$5,380

Admissions \$25,429

Events \$42,500

Path to Emotional Healing Program \$1,050

Gift Shop Sales \$11,403

**Total Income \$94,900**

### ***Expenses:***

Contract Services (staff, performers, artists) \$61,047

Facilities, maintenance, equipment \$16,083

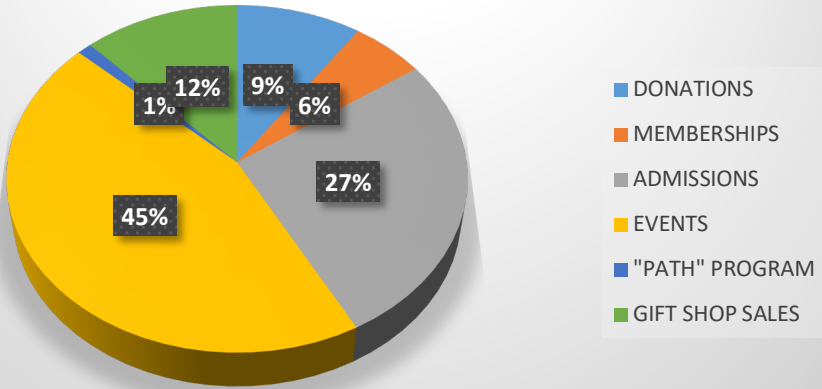
Supplies (gardens, events, administrative, shop) and Utilities \$31,065

Travels and meetings \$3,507

**Total Expenses \$111,702**

**Net Income -\$16,802**

# Revenue



# Expenses

